

20-25 JEEP WRANGLER JT Front Inner Fenders



CAUTION BEFORE INSTALLING

Before installation - Read and understand all instructions, warnings, cautions, and notes contained in this installation instruction guide. Consult your vehicle owner's manual for proper disconnection of electrical and lifting of vehicle if required for installation of this product.

This install may require some technical skills and knowledge of basic mechanical work. If you do not feel that you are capable of performing this install please take this product to a trained professional.

After reading this guide please contact us with any questions or concerns before installing product.

E-mail: tech@calliert4x4.com

CALLIERT is not responsible for any bodily injury or harm to you or your vehicle as a result of an improper install.

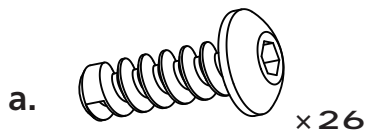
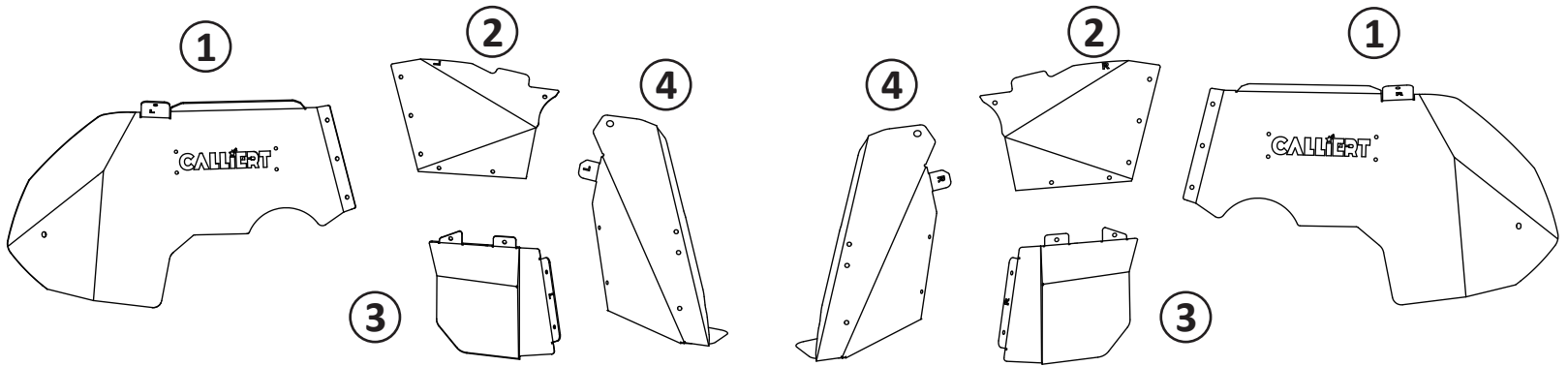
Proper installation of this kit requires knowledge of the factory recommended procedures for removal and installation of original equipment components. We recommend that the factory shop manual and any special tools needed to service your vehicle be on hand during the installation. Installation of this kit without proper knowledge of the factory recommended procedures may affect the performance of these components and the safety of the vehicle.

- **Always wear eye protection when operating power tools.**

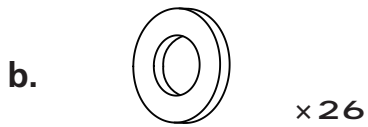
Inspect all contents of this package to make sure product is not damaged and all installation hardware has been included. If parts are missing from kit, please be prepared to provide the following information:

- Name of purchase location
- Bar Code on side of box

INSTALLATION MANUAL



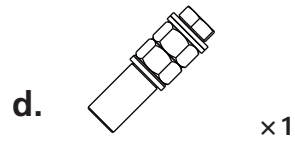
M6*20
Button Head Hex Socket Bolt



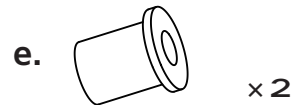
M6*14*1 Washer



M6 Hex Flange Nut



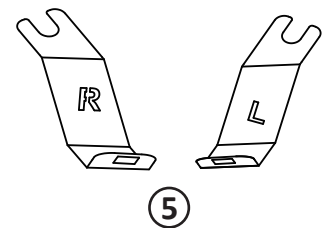
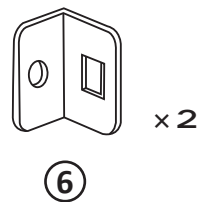
Rivet Nut Tool



Rivet Nut

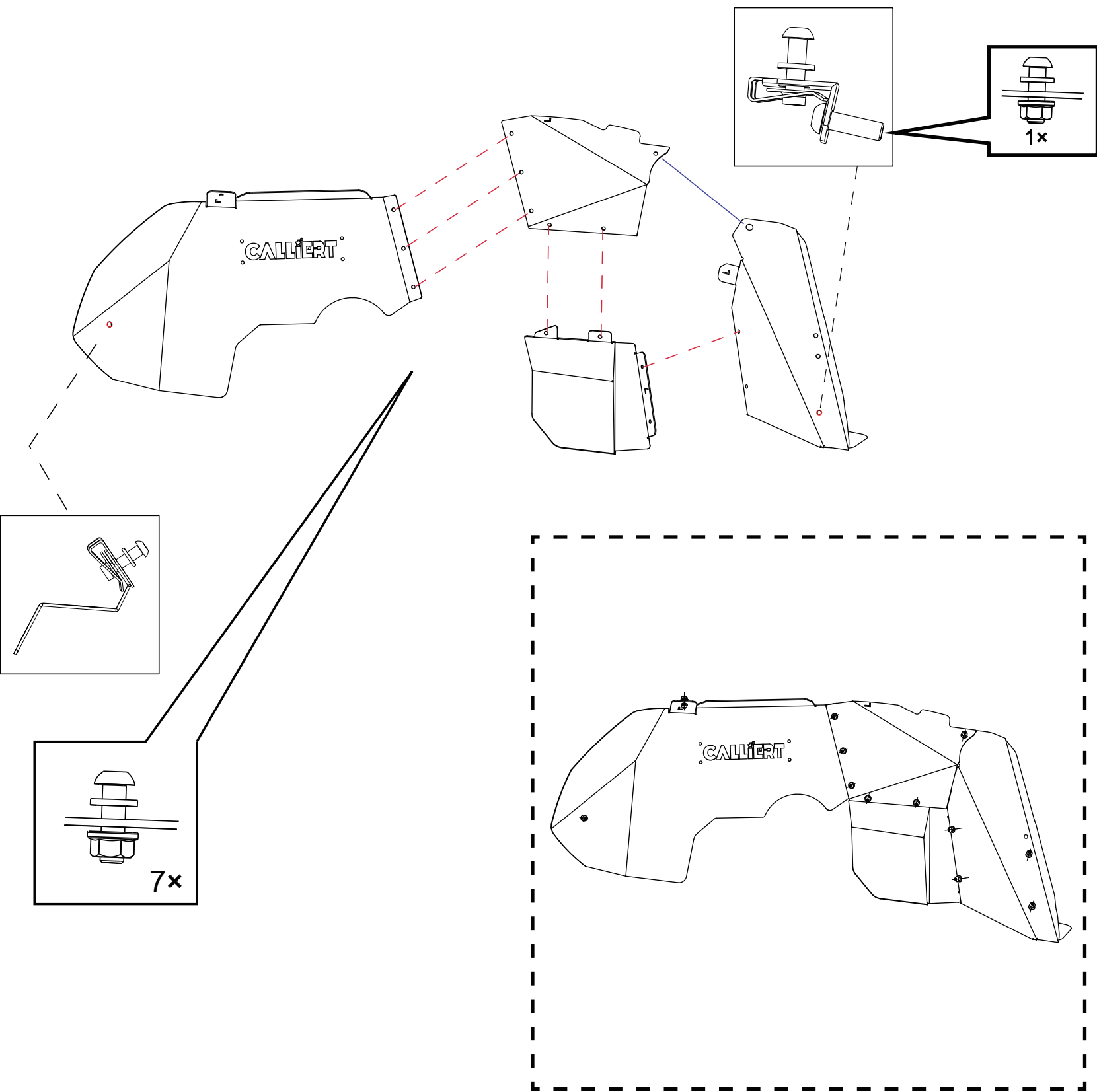


U-nut Clip



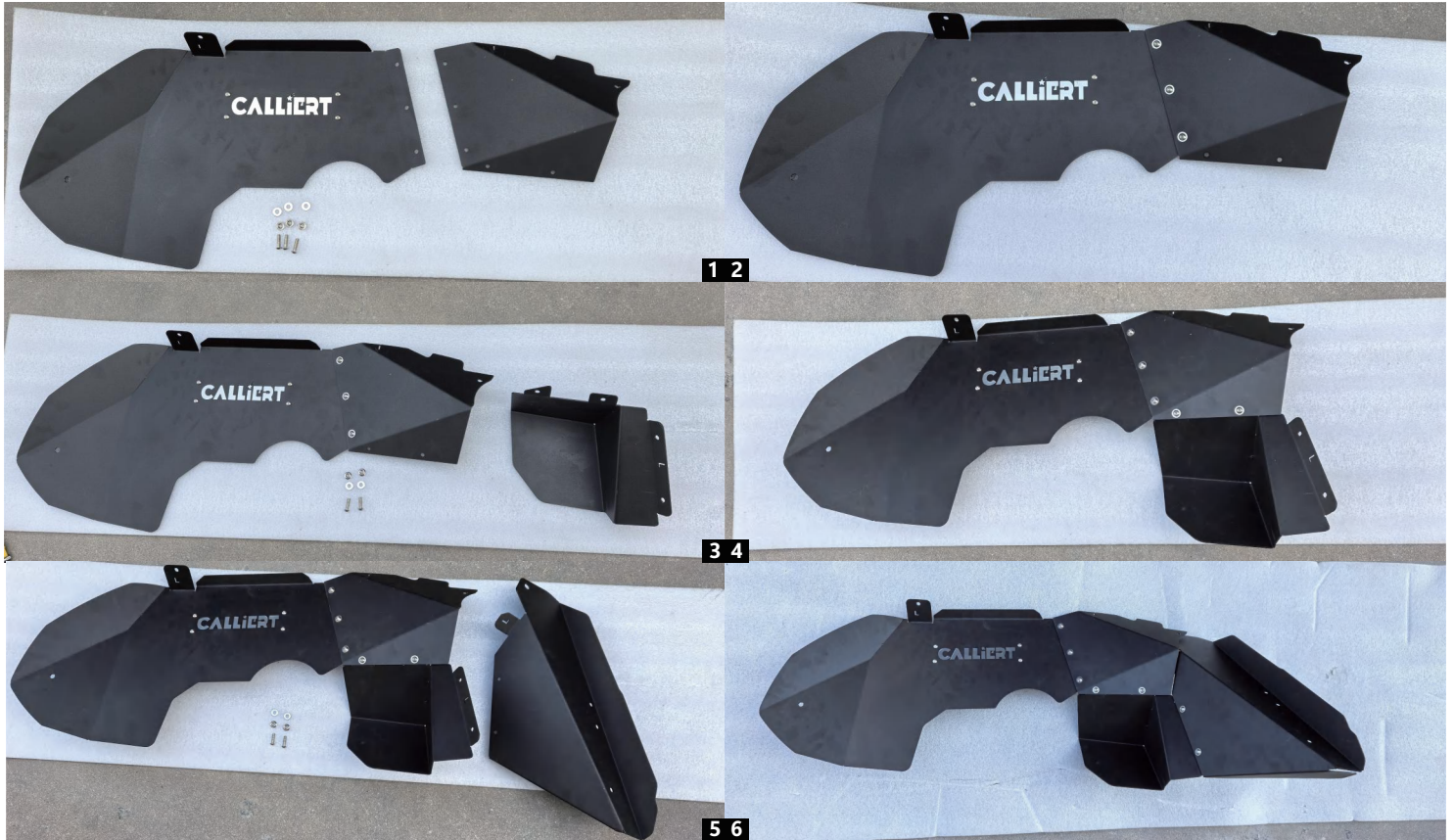
CALLIART

INSTALLATION MANUAL



CALLIERT

INSTALLATION MANUAL



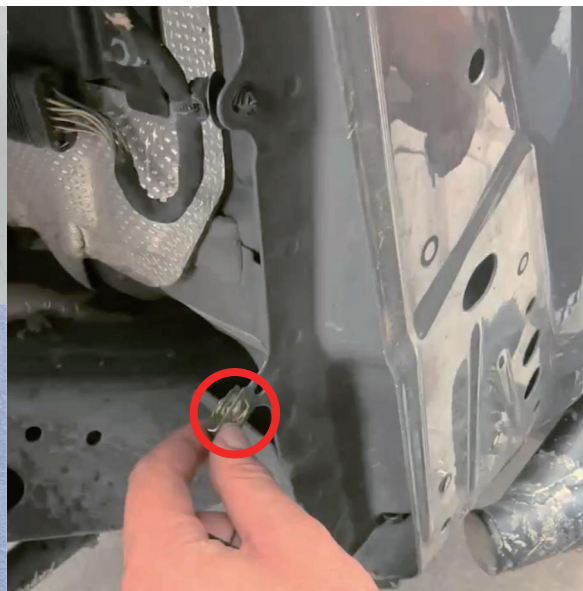
Begin by unpacking all items and inspecting them for damage or missing items. Any concerns, please contact the company you purchased the inner fenders from. Hardware required. Preassemble the front inner fender liner using bolts, washers, nuts. Leave the bolts finger tight, as they will be tightened in a later step.

(a*7 b*7 c*7)

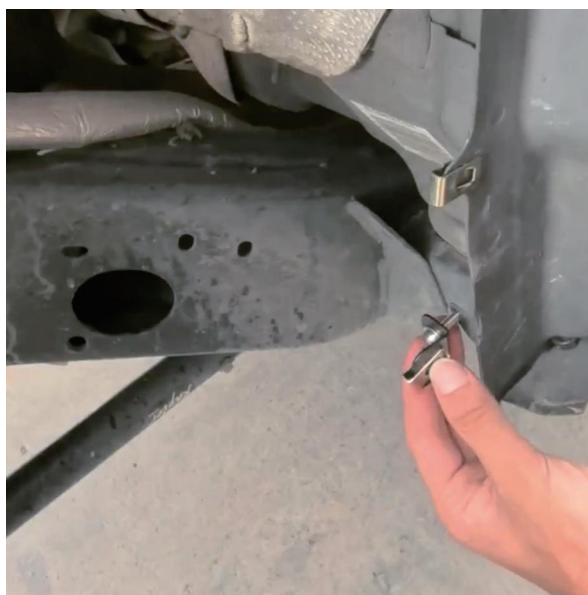
INSTALLATION MANUAL



Hardware required.
(a*1 b*1 c*1 e*1 f*3 ⑤*1 ⑥*1)



Place the clip nut to the designated holes on the vehicle's body.



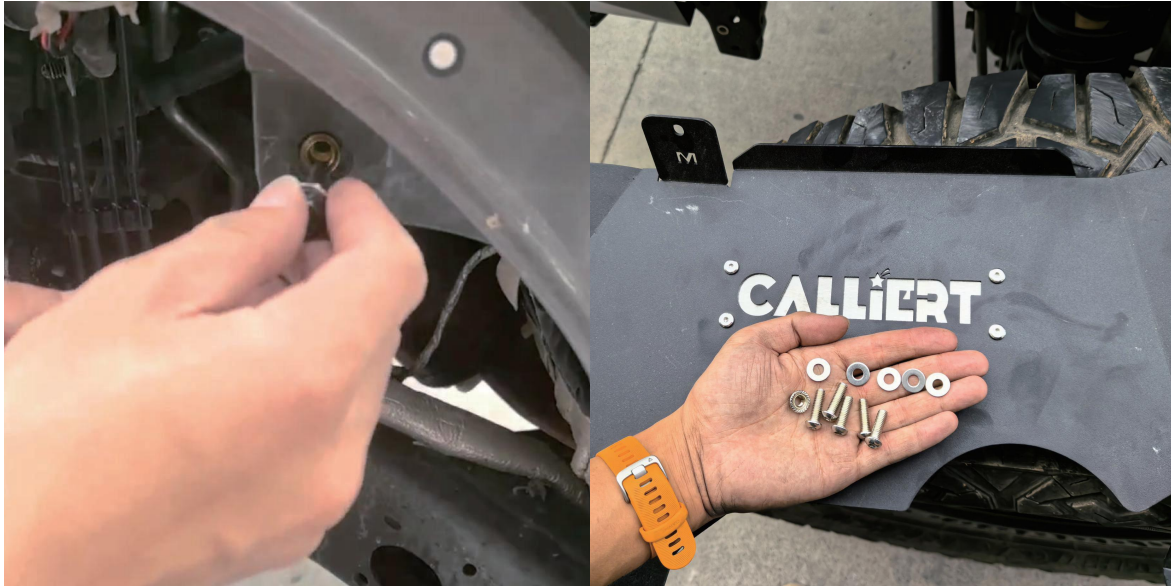
Secure the lower mounting point using the bolts, washers, threaded plate (item no.6). Connected by the clip nut.
Note: The U-nut Clip is fastened at the square hole, and the round hole is connected to the vehicle body with a screw.



Secure the top mounting point using the bolts, washers, threaded plate (item no.5). Place the clip nut to the threaded plate (item no.5).
Note: It is necessary to adjust the bracket to the proper position before tightening the screws.

CALLIERT

INSTALLATION MANUAL



Install the rivet nut into the designed hole.
Drilling is necessary to fit the rivet
nut into the hole.

Hardware required.
(a*5 b*5 c*1)



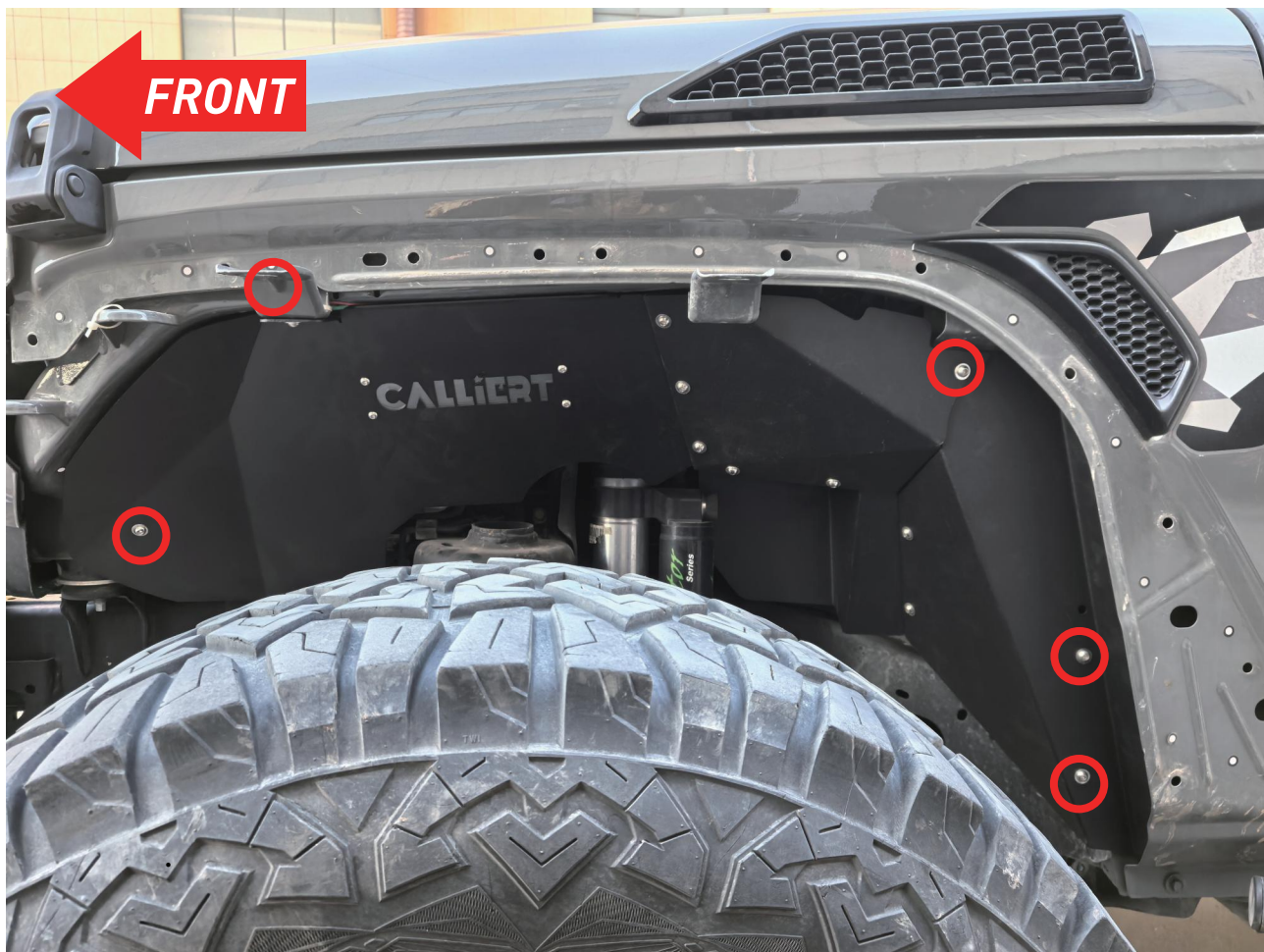
CALLIERT

INSTALLATION MANUAL



Mounting the pre-assembled liner to the body using bolts, washers and nuts. Next, attempt to tighten all the inner fender bolts that were previously hand tight. Bolt the last bolt through the factory hole.

INSTALLATION MANUAL



Repeat on the opposite side.



CALLiERT